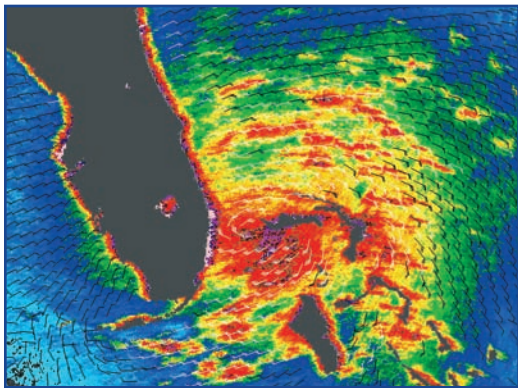


YOUR TASK

U.S. coastal areas are critically important to the nation's economy. For that reason, NASA and the National Ocean Service have formed a joint task force that is studying the trends and impacts of hurricanes on coastal regions. They have invited your group to participate.

You are tasked with conducting an Earth system science analysis of Hurricane Katrina. Your report should also examine the question: "How could future climate change impact the frequency and intensity of hurricanes?"



RESOURCES

Here are some resources to get you started. You will need to find additional, high-quality resources to complete your task.

Arlene to Zeta: 27 Storms of the 2005 Season
<http://svs.gsfc.nasa.gov/goto?3354>

Hurricane-Biosphere Connection
http://www.nasa.gov/centers/goddard/news/topstory/2004/0602hurricane_bloom.html

NASA Hurricane Resource Page
http://www.nasa.gov/mission_pages/hurricanes/main/index.html

National Hurricane Center
<http://www.nhc.noaa.gov>

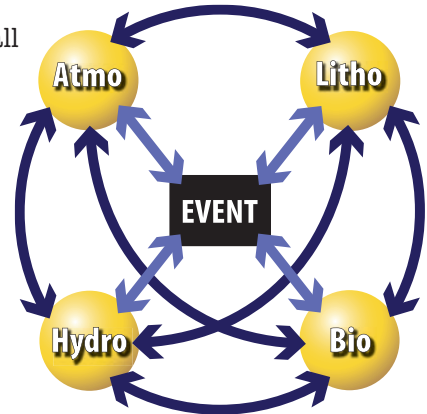
Stronger Hurricanes: Is Global Warming Making Hurricanes More Intense?
<http://www.pbs.org/wgbh/nova/sciencenow/3302/07.html>

What Is an Earth System Science Analysis?

Earth is a system. The system can be divided into four major parts called "spheres." These are the atmosphere (air), biosphere (all living things, including people), lithosphere (land) and hydrosphere (water in all forms, including liquid, frozen and vapor).

Earth's spheres interact. An event—such as a hurricane—can cause changes or impacts to one or more of Earth's four spheres; it can also be the result of such changes.

The two-way, cause-and-effect relationship between an event and a sphere is called an interaction. Interactions also occur between the spheres; for example, a change in the atmosphere can cause a change or impact in the hydrosphere, and vice versa.



Your Earth system science analysis (ESS) should include a description of the impacts and interactions between and among Hurricane Katrina and the Earth's spheres.

An ESS analysis is done in three steps, which include looking at:

- How the event affects each of the spheres ($E > S$);
- How the spheres affect the event ($S > E$); and
- How the spheres affect each other ($S > S$).

A very simple example: $L > E$ = impact of the lithosphere (L) on the hurricane (E). As the hurricane passes over land, the energy source (warm ocean water) is removed and the hurricane starts to weaken.

Causal Chains: In a system, nothing occurs in isolation. The interactions that occur within Earth's system actually occur as a series of chain reactions and complex interactions. Make sure that your analysis includes the systemic relationships, called causal chains, where multiple spheres and/or the event are involved in complex and interrelated changes. Each causal chain should include at least three interactions (e.g., $E > S > S$ or $S > S > S$).



■ ASSIGNMENT

Working with your group, use the following problem solving model to do your project.

1. Read and analyze the scenario and task on pages 1–2:

- Discuss the scenario with your team.
- Don't be tempted to start thinking about potential solutions or to start looking for information.

2. List initial hypotheses, ideas, or hunches:

- Based on what you have read, what do you think?
- List your ideas, hunches, or hypotheses.

3. List what you already know:

- Begin your list with the information contained in the scenario.
- Add knowledge shared by other group members.
- Record this information under the heading: "What do we know?"

4. List what is unknown:

- Prepare a list of questions your group thinks need to be answered to do your analysis.
- Record them under the heading: "What do we need to know?"

5. List what needs to be done:

- Develop a plan. List actions such as questioning an expert, getting online data, or visiting a library to find answers to the questions developed in Step 4.
- Prioritize the questions you are trying to answer, then divide up the questions among your team.



6. Develop a problem statement:

- A problem statement is a one- or two-sentence idea that clearly identifies what your team is trying to solve, produce, respond to, test, or find out.
- Record your statement.

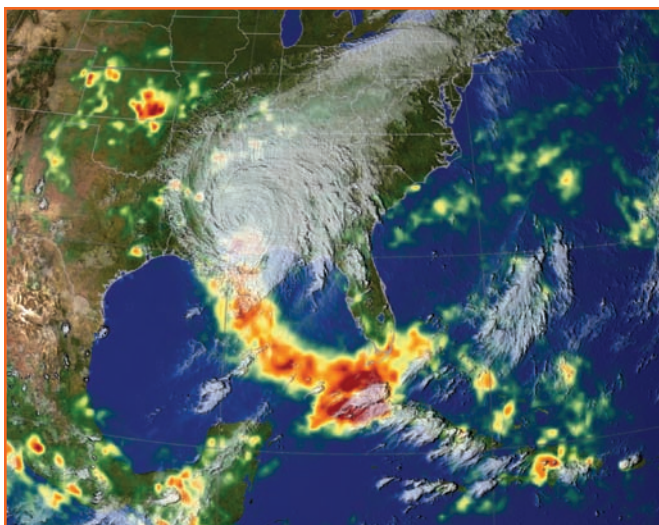
7. Gather information:

- Record your information and resources.
- You and your team will gather, organize, analyze, and interpret information from multiple sources.
- Exchange ideas; think about solutions; weigh alternatives; and consider the pros and cons of potential courses of action.

8. Present findings:

- Prepare a report or presentation in which you and your group make recommendations, predictions, inferences, or other appropriate resolutions of the problem.
- Be prepared to support your positions. If appropriate, consider a multimedia presentation using images, graphics, and/or sound.

The steps in this model may need to be completed several times. Steps 2 through 6 may be conducted at the same time, as new information becomes available. As more information is gathered, the problem statement may be refined or altered.



All satellite images courtesy of NASA and NOAA.

